



Weir International, Inc.
Mining, Geology and Energy Consultants

Overview
of the
United States
Coal Mining Industry

Table of Contents

Historical Coal Production, Productivity, Use and Sales Price

- Coal Production by Coal Rank
- Coal Production by Mine Type
- Coal Production by Geographic Region
- Coal Mine Productivity
- 2008 Coal Consumption - Coal Source (Percent)
- 2008 Coal Use (Percent)
- Coal Inventory at Electricity Generating Plants
- FOB Mine Coal Sales Price by Coal Type (Nominal Dollars)
- Bituminous Coal FOB Mine Coal Sales Price (Nominal and Real Dollars)
- NYMEX Coal Futures Settlement Price
- Average Metallurgical Coal Sales Price Delivered to Port or Domestic Coke Plants (Average of All Classifications of Metallurgical Coal)

Projected Coal Production, Use and Sales

- Projected Coal Production by Coal Classification
- Projected Coal Production by Sulfur Content
- Historical and Projected Coal Production by Coal Producing Region
- Projected Coal Production by Mining Method
- Projected Coal Exports
- Projected Coal Consumption by Sector
- Projected FOB Mine Coal Sales Price (Nominal Dollars)
- Projected FOB Mine Coal Sales Price by Coal Producing Region and Sulfur Content (Nominal Dollars)
- Project Delivered Coal Sales Price by Coal Type or Use (Nominal Dollars)

Coal Reserves, Largest Coal Producers and Largest Mines

- Major Coal Reserve Holdings As of December 31, 2008
- Public Coal Company Coal Reserves (Million Tons) As of December 31, 2008
- Twenty Largest Coal Producing Companies (Year 2008)
- Ten Largest Longwall and Non-Longwall Underground Mines (Year 2008)
- Ten Largest Western and Eastern Surface Mines (Year 2008)

Coal-Fired Plant Development

- Current Locations of Coal-Fired Power Plant Projects
- Current and Planned Coal-Fired Power Plant Projects
- Proposed Technology of New Power Plants (As of October 8, 2009)
- Current and Planned Power Plant Desulfurization Projects

Fossil-Fueled Power Plant Emissions

- Nitrogen Oxide and Sulfur Dioxide Emissions Fossil-Fueled Power Plants
- Projected Emissions - Fossil-Fueled Power Plants
- Carbon Dioxide Emissions by Fuel Source, Fossil-Fueled Power Plants

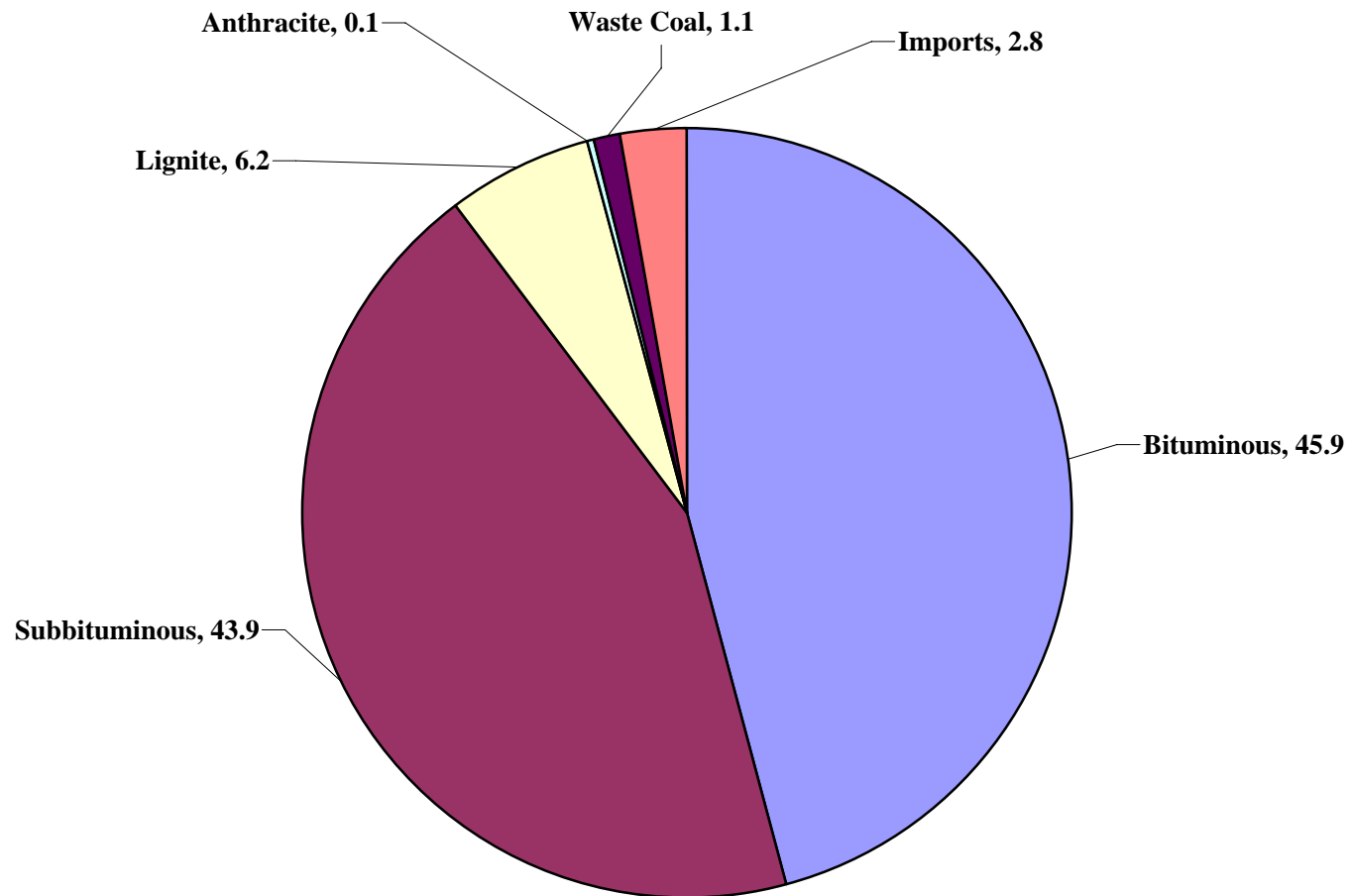
Electricity Generation, Fuel Price and Sales Price

- Electricity Prices and Percent of Generation from Coal
- Historical Electricity Generation by Energy Source
- Projected Electricity Generation by Fuel Type
- Fossil Fuel Delivered Price to Power Plants
- Electricity Sales by End Use
- Projected Delivered Cost of Fuel to Power Plants (Nominal Dollars)

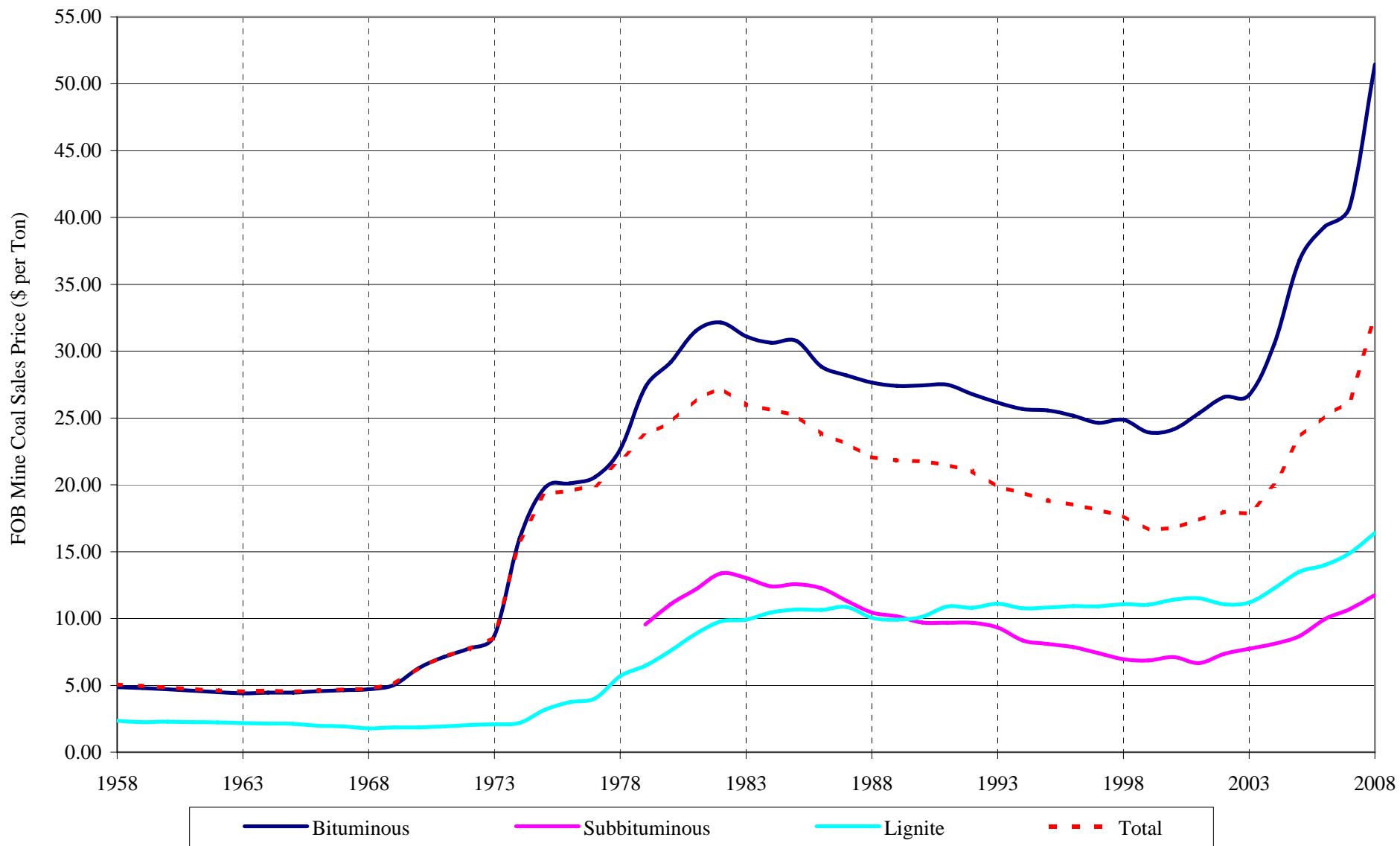
Exhibit

- Major Coal Mines Operating in Year 2008

2008 Coal Consumption - Coal Source (Percent)

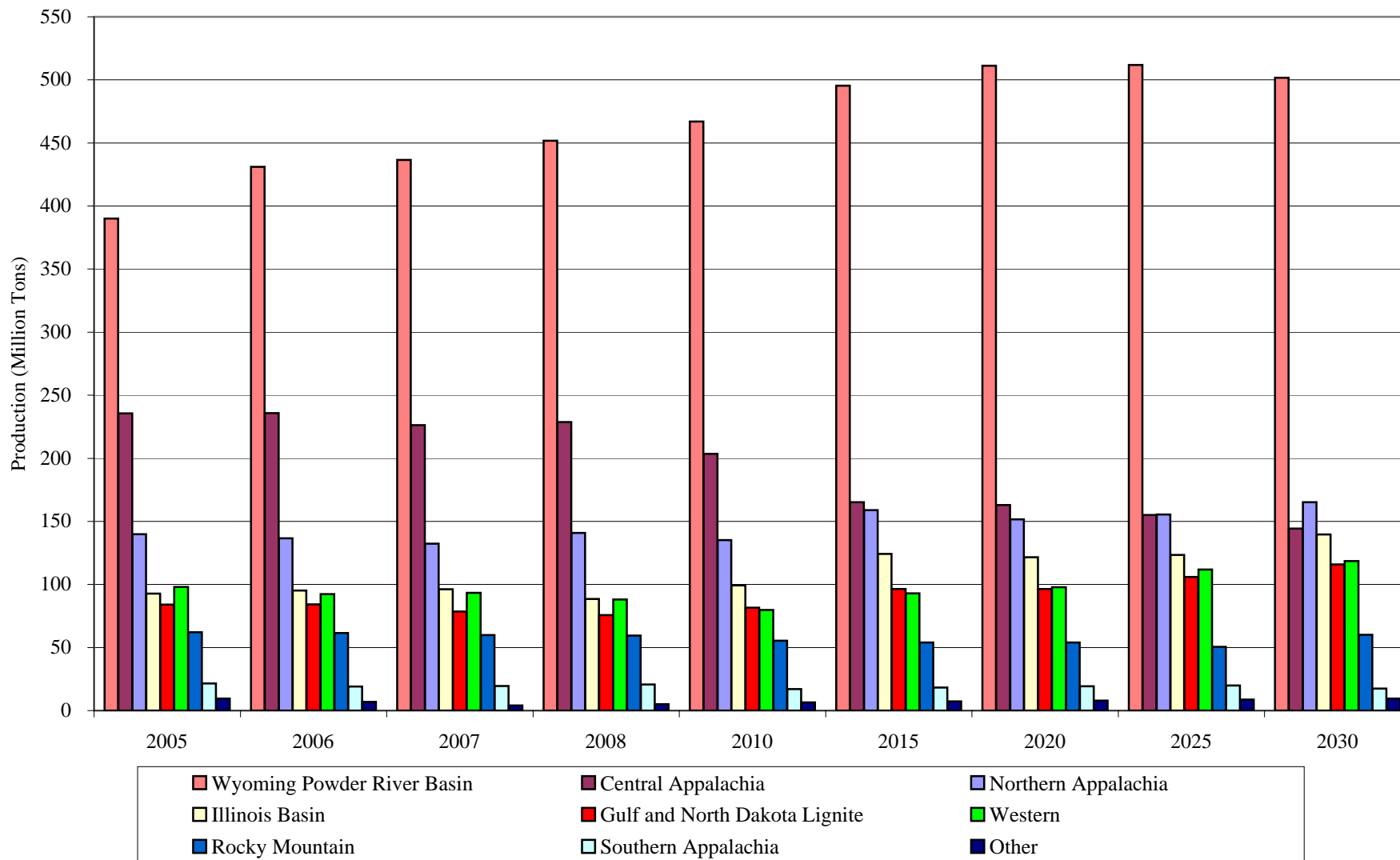


FOB Mine Coal Sales Price by Coal Type (Nominal Dollars)



Note: Total includes anthracite coal sales

Historical and Projected Coal Production by Coal Producing Region



Twenty Largest Coal Producing Companies (Year 2008)

Rank	Coal Producing Company	Production (000 Tons)	% of Total US Production	Number of Employees	Tons per Employee Hour
1	Peabody Energy	196,215	16.74	5,353	15.98
2	Rio Tinto Energy America, Inc.	147,690	12.60	2,414	28.78
3	Arch Coal, Inc.	132,877	11.34	4,013	14.42
4	Foundation Coal Corporation	69,366	5.92	2,850	10.09
5	CONSOL Energy Inc.	61,362	5.23	6,033	4.21
6	Massey Energy Company	41,440	3.54	5,615	2.93
7	The North American Coal Corporation	32,632	2.78	1,343	11.87
8	Peter Kiewit Sons, Inc.	31,885	2.72	616	23.38
9	Westmoreland Coal Company	29,275	2.50	1,102	12.91
10	Patriot Coal Corporation	27,183	2.32	3,924	2.88
11	Alliance Coal, LLC	26,073	2.22	2,583	3.82
12	Murray Energy Corporation	25,692	2.19	2,678	4.13
13	Energy Future Holding Corporation (TXU)	23,307	1.99	1,553	6.94
14	Alpha Natural Resources, LLC	19,762	1.69	3,285	2.57
15	International Coal Group, Inc.	19,161	1.63	2,238	3.53
16	BHP Minerals Group	15,952	1.36	947	8.52
17	Pittsburg & Midway Coal Mining Company	10,976	0.94	1,745	2.94
18	James River Coal Company	10,616	0.91	1,143	4.06
19	Frasure Creek Mining, LLC	8,718	0.74	1,554	2.62
20	Wexford Capital, LLC	6,932	0.59	722	6.20
		937,114	79.95	44,463	14.20
	Total US Coal Production	1,172,171		80,570	6.15



For a complete copy of Weir International, Inc.'s *Overview of the United States Coal Mining Industry* brochure, please contact us at weir@weirintl.com.