



---

**Weir International, Inc.**  
Mining, Geology and Energy Consultants

United States

Longwall Mining Statistics

1989 - 2009 (September YTD)

## Table of Contents

### Tables

1	2008 US Longwall Census
2	2009 US Longwall Mine Production and Productivity - (September YTD)
3	2008 US Longwall Mine Production and Productivity
4	2007 US Longwall Mine Production and Productivity
5	2006 US Longwall Mine Production and Productivity
6	2005 US Longwall Mine Production and Productivity
7	2004 US Longwall Mine Production and Productivity
8	2003 US Longwall Mine Production and Productivity
9	2002 US Longwall Mine Production and Productivity
10	2001 US Longwall Mine Production and Productivity
11	2000 US Longwall Mine Production and Productivity
12	1999 US Longwall Mine Production and Productivity
13	1998 US Longwall Mine Production and Productivity
14	Longwall Mine Productivity and Years of Mine Operation

### Figures

1	Number and Size of Longwall Mines
2	Production from Longwall Mines Compared to Non-Longwall Underground Mines
3	Production from Union Longwall Mines Compared to Non-Union Longwall Mines (Percent of Total Longwall Production)
4	Production from Eastern Longwall Mines Compared to Western Longwall Mines (Percent of Total Longwall Production)
5	US Coal Production by Mine Type
6	Productivity from Longwall Mines Compared to Non-Longwall Underground Mines
7	Productivity from Union Longwall Mines Compared to Non-Union Longwall Mines
8	Productivity from Eastern Longwall Mines Compared to Western Longwall Mines
9	Employees at Longwall Mines Compared to Non-Longwall Underground Mines
10	US Longwall Mine Panel Dimensions

### Exhibit

1	US Longwall Mines Operating as of January 1, 2009
---	---

#### Notes:

Controlling Companies and Operating Companies for all years are listed as current owners and operators.

All tonnage is expressed in clean tons.

Data for number of employees and tons per employee-hour include employees working underground, on the surface, and in the preparation plant, as well as office workers at the mine site, as reported on MSHA Form 7000-2.

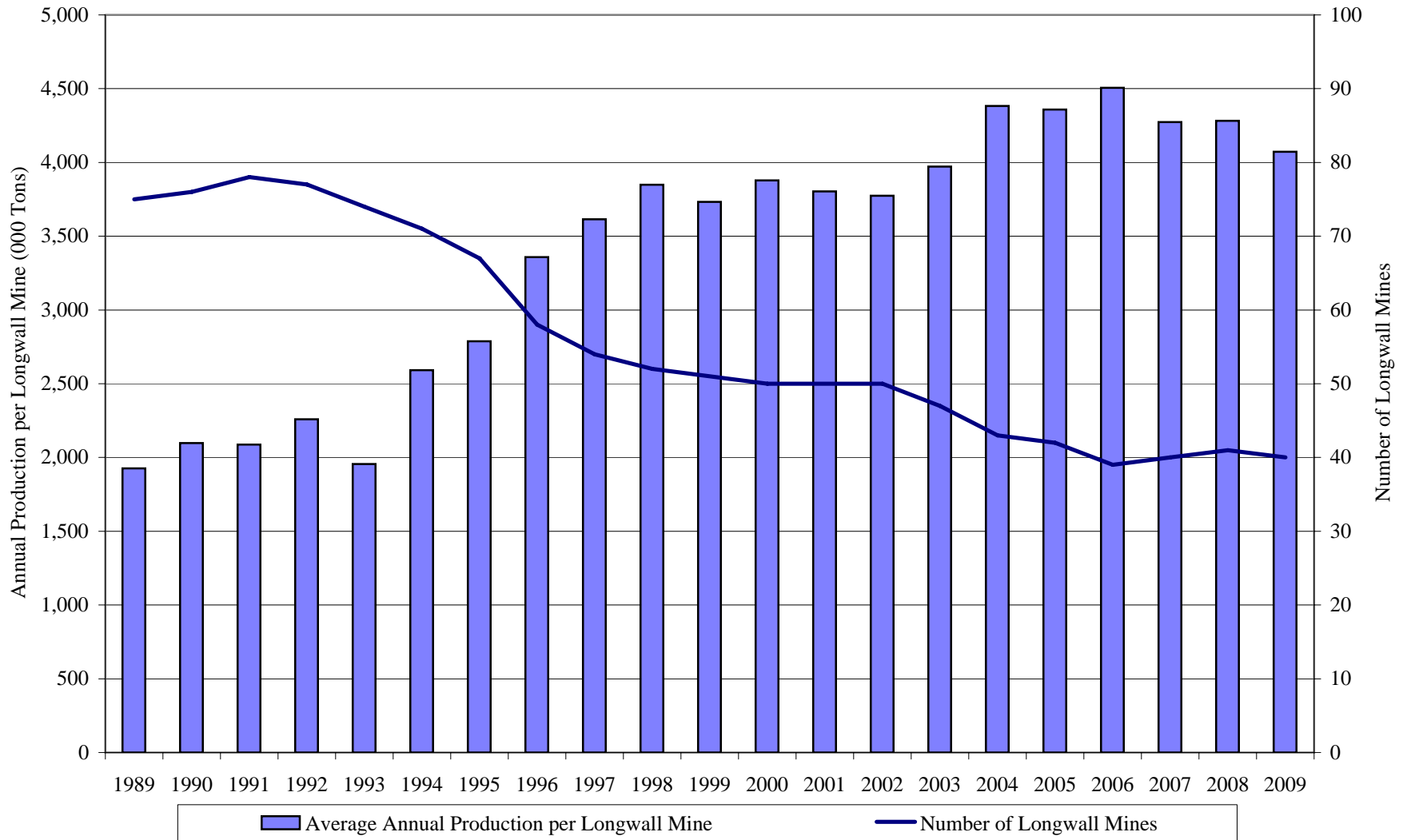
Data source for all Tables and Figures, except Table 1 and Figure 10, is Platts COALdat and SNL. Data source for Table 1 and Figure 10 is Coal Age, February 2008.

2009 data is September year-to-date actual or annualized information (based on September YTD).

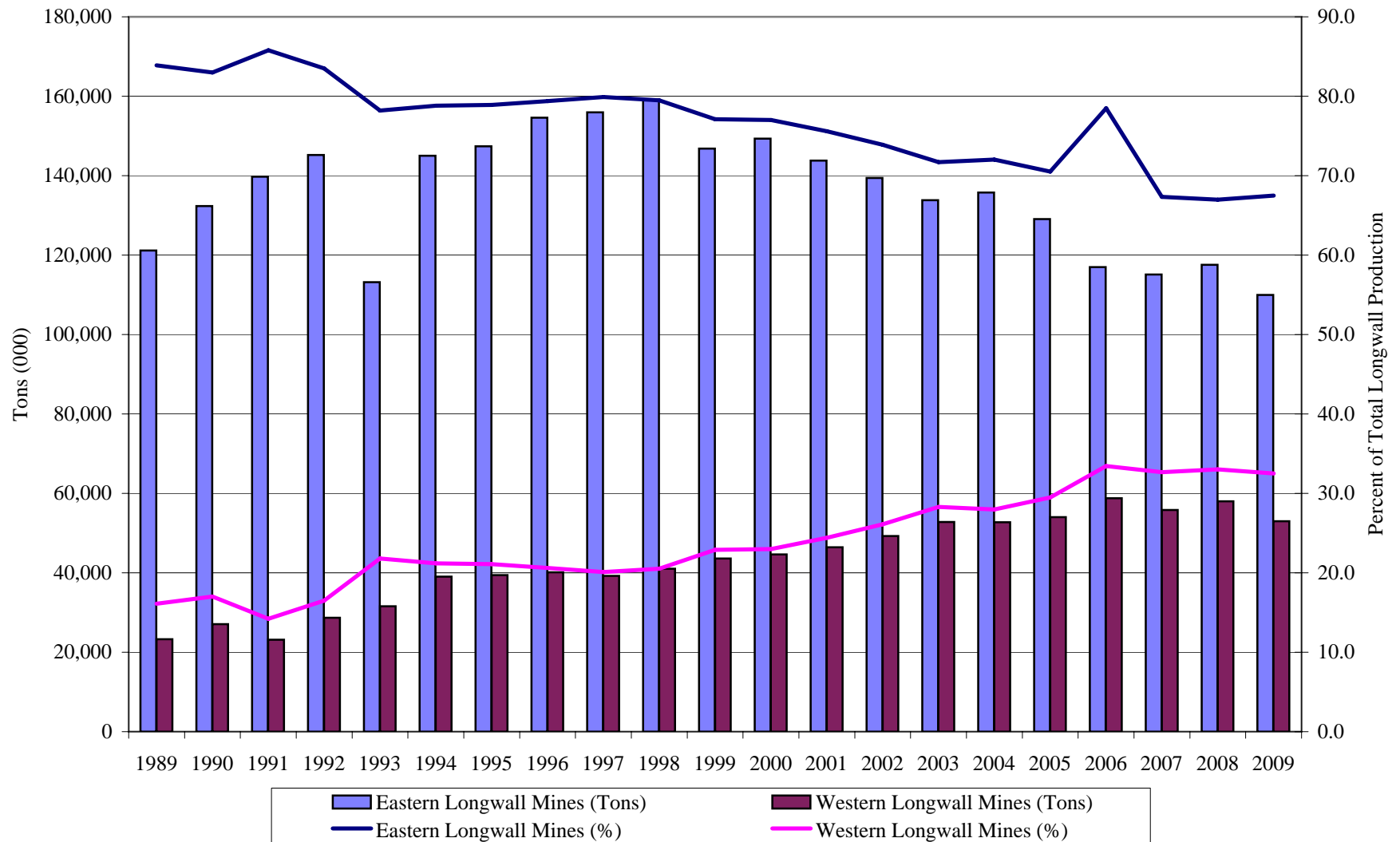
Table 2  
2009 US Longwall Mine Production and Productivity  
(September Year-to-Date)

Productivity Ranking	Controlling Company	Operating Company	Mine	State	County	Union Affiliator	Tons (000)	No. of Employees	Average Tons Per Employee Hour
1	Williamson Energy, LLC	Mach Mining, LLC	Mach No. 1	IL	Williamson	Non-Union	4,326	175	13.55
2	Oxbow Carbon & Minerals, Inc.	Oxbow Mining, Inc.	Elk Creek	CO	Gunnison	Non-Union	4,674	350	9.13
3	Arch Coal, Inc.	Canyon Fuel Company, LLC	Sufco	UT	Sevier	Non-Union	4,812	369	8.18
4	BHP Minerals Group	San Juan Coal Company	San Juan South	NM	San Juan	Oper. Engrs.	5,171	465	7.69
5	Peabody Energy	Twentymile Coal Company	Twentymile	CO	Routt	Non-Union	6,974	572	7.45
6	Deseret Generation & Transmission Coop	Blue Mountain Energy, Inc.	Deserado	CO	Rio Blanco	UMWA	1,768	174	7.00
7	CONSOL Energy Inc.	CONSOL Pennsylvania Coal Company	Enlow Fork	PA	Greene	Non-Union	8,522	644	7.00
8	C W Mining Company	C W Mining Company	Bear Canyon No. 4	UT	Emery	Non-Union	633	103	6.59
9	PacifiCorp	Energy West Mining Company	Deer Creek	UT	Emery	UMWA	2,827	331	6.06
10	Alliance Resource Partners, LP	Mettiki Coal WV, LLC	Mountain View	WV	Tucker	Non-Union	1,725	196	5.52
11	Pacific Minerals, Inc.	Bridger Coal Company	Bridger Underground	WY	Sweetwater	IBB	2,312	233	5.51
12	Arch Coal, Inc.	Mingo Logan Coal Company	Mountaineer II	WV	Logan	Non-Union	2,901	305	5.40
13	Murray Energy Corporation	American Energy Corporation	Century	OH	Monroe	Non-Union	4,546	490	5.30
14	Arch Coal, Inc.	Canyon Fuel Company, LLC	Skyline No. 3	UT	Carbon	Non-Union	1,941	216	5.26
15	CONSOL Energy Inc.	CONSOL Pennsylvania Coal Company	Bailey	PA	Greene	Non-Union	7,520	772	5.19
16	Murray Energy Corporation	The Ohio Valley Coal Company	Powhatan No. 6	OH	Belmont	UMWA	4,989	544	5.15
17	Murray Energy Corporation	UtahAmerican Energy, Inc.	West Ridge	UT	Carbon	Non-Union	2,551	340	4.97
18	Arch Coal, Inc.	Canyon Fuel Company, LLC	Dugout Canyon	UT	Carbon	Non-Union	2,356	284	4.95
19	CONSOL Energy Inc.	McElroy Coal Company	McElroy	WV	Marshall	UMWA	7,255	865	4.48
20	CONSOL Energy Inc.	CONSOL Energy Inc.	Loveridge No. 22	WV	Marion	UMWA	4,403	562	4.42
21	Arch Coal, Inc.	Mountain Coal Company, LLC	West Elk	CO	Gunnison	Non-Union	3,040	416	4.34
22	CONSOL Energy Inc.	CONSOL Energy Inc.	Robinson Run No. 95	WV	Harrison	UMWA	4,143	520	4.25
23	Foundation Coal Corporation	Emerald Mines Corporation	Emerald No. 1	PA	Greene	UMWA	4,051	695	3.54
24	Foundation Coal Corporation	Foundation Coal West, Inc.	Cumberland	PA	Greene	UMWA	5,200	738	3.91
25	Magnum Coal Company	Speed Mining, Inc.	American Eagle	WV	Kanawha	Non-Union	1,364	205	3.44
26	Patriot Coal Company, LP	Eastern Associated Coal Corp.	Federal No. 2	WV	Monongalia	UMWA	2,637	496	3.26
27	Chevron Texaco Corporation	Pittsburg & Midway Coal Mining Company	North River No. 1	AL	Tuscaloosa	UMWA	1,824	372	2.96
28	Murray Energy Corporation	The American Coal Company	Galatia No. 56-1	IL	Saline	Non-Union	4,961	954	2.91
29	CONSOL Energy Inc.	CONSOL Energy Inc.	Blacksville No. 2	WV	Monongalia	UMWA	2,532	529	2.76
30	Walter Industries, Inc.	Jim Walter Resources, Inc.	Jim Walters No. 4	AL	Tuscaloosa	UMWA	2,113	517	2.34
31	Massey Energy Company	Independence Coal Company, Inc.	Revolution (Justice No. 1)	WV	Boone	Non-Union	349	152	2.16
32	CONSOL Energy Inc.	CONSOL Energy Inc.	Buchanan No. 1	VA	Buchanan	Non-Union	1,509	557	1.98
33	Massey Energy Company	Elk Run Coal Company, Inc.	Logans Fork (Castle)	WV	Boone	Non-Union	294	81	1.89
34	Walter Industries, Inc.	Jim Walter Resources, Inc.	Blue Creek No. 7	AL	Tuscaloosa	UMWA	2,617	761	1.89
35	CONSOL Energy Inc.	Eighty-Four Mining Company	Mine 84	PA	Washington	UMWA	514	254	1.60
36	Bowie Resources, LLC	Bowie Resources, Ltd.	Bowie No. 2	CO	Delta	Non-Union	675	309	1.47
37	Drummond Company, Inc.	Drummond Company, Inc.	Shoal Creek	AL	Jefferson	UMWA	1,249	556	1.37
38	Cleveland Cliffs, Inc.	Oak Grove Resources, LLC	Oak Grove	AL	Jefferson	UMWA	558	318	1.05
39	Cleveland Cliffs, Inc.	Pinnacle Mining Company, LLC	Gary No. 50 (Pinnacle)	WV	Wyoming	UMWA	157	239	0.42
40	CONSOL Energy Inc.	CONSOL Energy Inc.	Shoemaker	WV	Marshall	UMWA	196	391	0.27
Total All Longwall Mines							122,189	17,050	4.23
Average Tons and Employees per Longwall Mine per Year							3,055	426	
Total All US Underground Mines							247,167	45,776	3.23
Total All US Non-Longwall Underground Mines							124,978	28,727	2.64
Longwall Mines as a Percent of US Underground Mines							49.4	37.2	

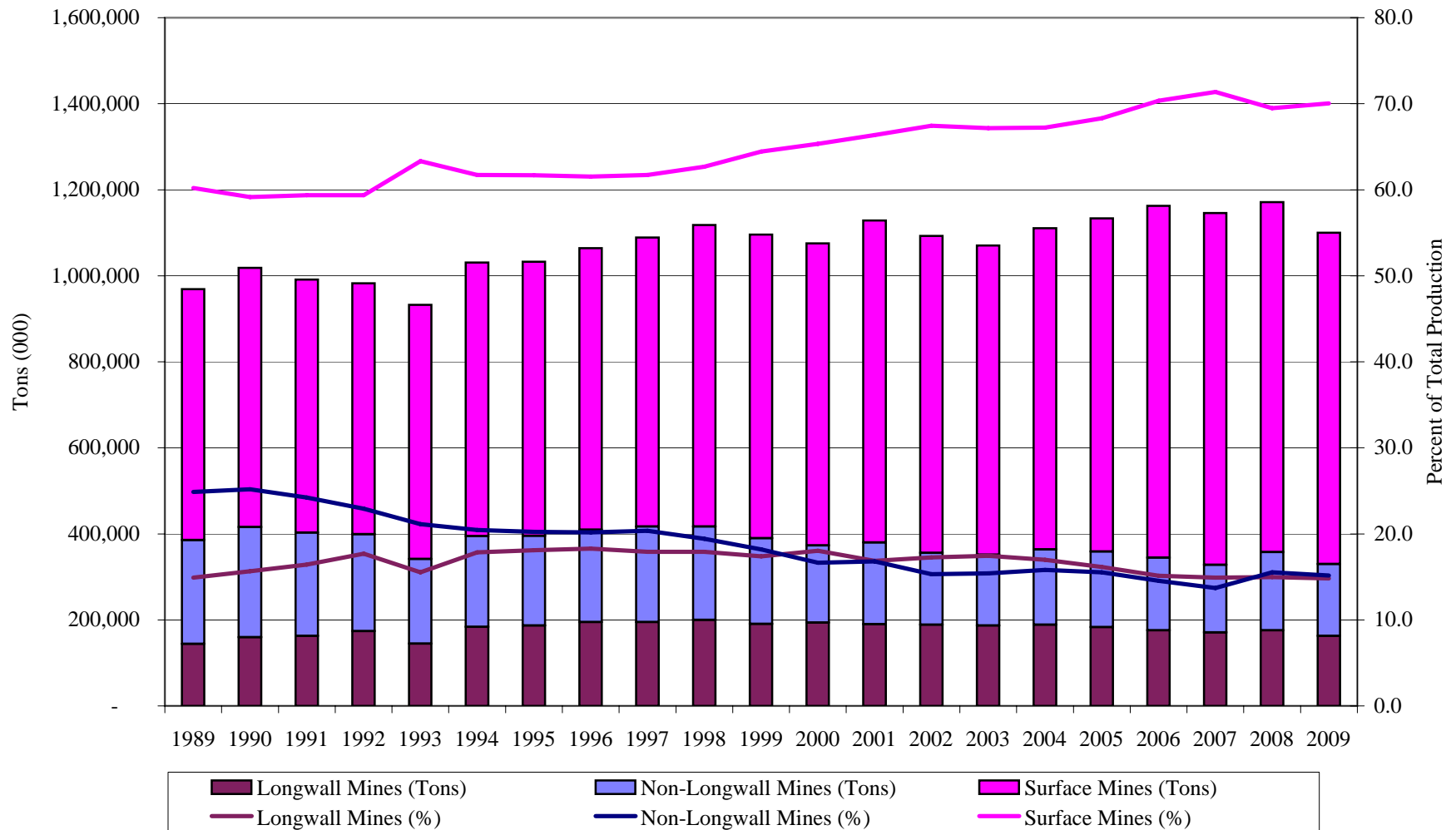
**Figure 1**  
**Number and Size of Longwall Mines**



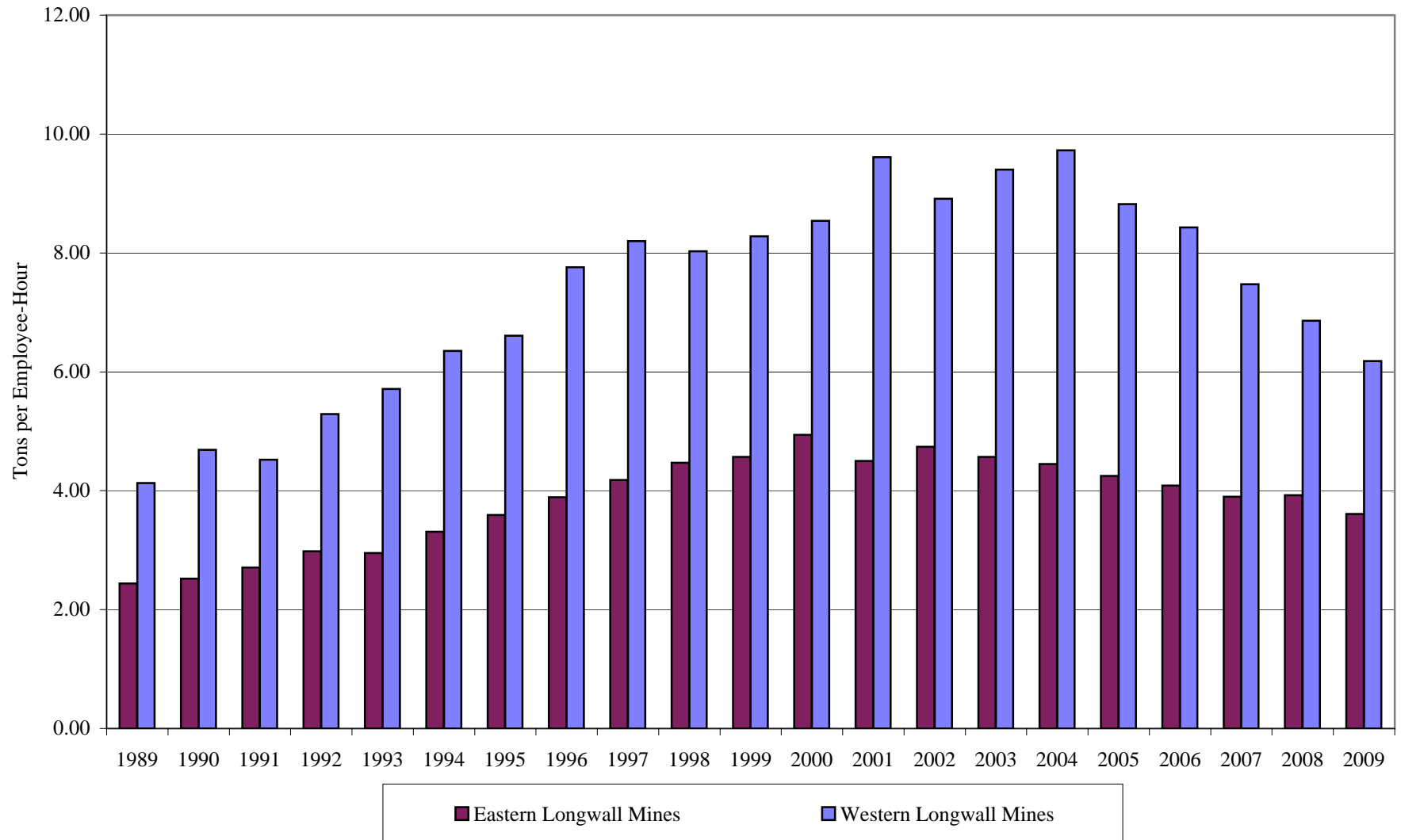
**Figure 4**  
**Production from Eastern Longwall Mines Compared to Western Longwall Mines**



**Figure 5**  
**US Coal Production by Mine Type**



**Figure 8**  
**Productivity from Eastern Longwall Mines Compared to Western Longwall Mines**





For a complete copy of Weir International, Inc.'s *United States Longwall Mining Statistics 1989 - 2009 (September YTD)* brochure, please contact us at [weir@weirintl.com](mailto:weir@weirintl.com).